

Please say briefly why you would like to join the Edinburgh Geological Society.

I agree, once elected to membership, to abide by the Laws of the Edinburgh Geological Society*

Signed _____

Date _____

* The Laws of the Society can be found on the website.

GIFT AID DECLARATION (If you are a UK income tax payer)
Charity: EDINBURGH GEOLOGICAL SOCIETY
(Please complete in block capitals and send to EGS Membership Secretary)

Donor: Full name (Dr, Mr, Mrs, etc) _____

Surname _____

Forenames _____

Address _____

_____ Postcode _____

I declare that, from the date of this declaration until my resignation from the Society, each of my membership subscription payments sent to the EDINBURGH GEOLOGICAL SOCIETY since 6th April 2000 shall be regarded as a Gift Aid Donation, unless this declaration is cancelled (in writing or otherwise). I declare that I am a UK income tax payer and that I pay an amount of income tax or capital gains tax equal to or greater than the tax deducted from my donation (all tax reclaimed by the Society will be at standard rate).

Signed _____

Date _____



Some of Scotland's oldest rocks: folded pink granite veins intruded into gneiss at around 2.7 billion years ago, Northwest Highlands. Andrew McMillan.

For its size, Scotland has an amazingly diverse geology, more so than that of many other countries. It has been over three billion years in the making and has given us many internationally important geological sites, fossils, minerals and resources.

The beauty of Scotland's scenery and the importance of our cultural and industrial heritage are undisputed. But an understanding of the underlying geology will help you appreciate Scotland even more.

Let the Society broaden your horizons!

How do I join?

Complete the attached application form and send it, with your subscription, to the Membership Secretary (details below).

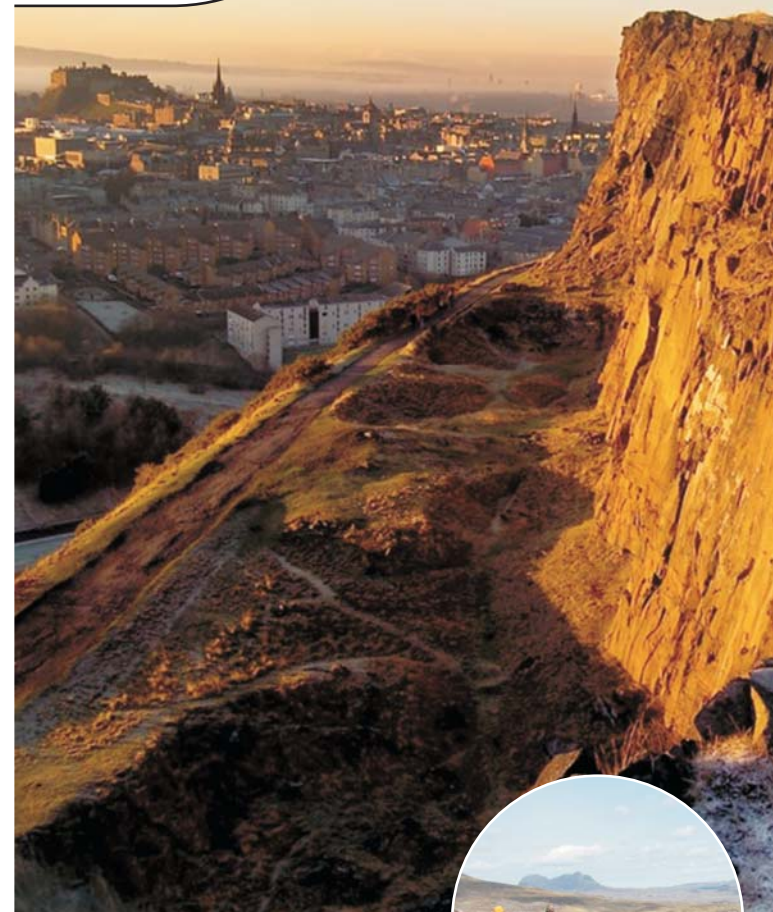
Once the Society's Council has approved your application, you will be elected and will receive your Welcome Pack. A PDF version of the application form can also be downloaded from www.edinburghgeolsoc.org

Membership Secretary

Mrs Christine Thompson
85 Grange Loan
Edinburgh
EH9 2ED



EDINBURGH GEOLOGICAL SOCIETY



Design: harvey-ds.com. Photography: British Geological Survey, Bill Gilmour, Andrew McMillan.



For more information on the
Edinburgh Geological Society,
e-mail: membership@edinburghgeolsoc.org
or visit our website at: www.edinburghgeolsoc.org

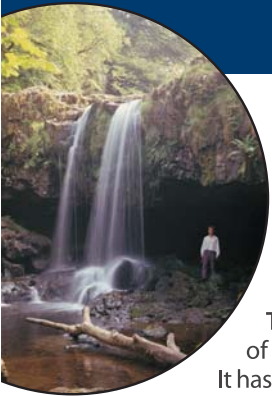
Charity registered in Scotland no. SC008011

Join the
Edinburgh Geological Society
and discover the geology
around you.

www.edinburghgeolsoc.org

Interested in the Earth and its landscapes?

Yes? Then join the Edinburgh Geological Society!



Come and discover the geology that is all around you in the company of friendly enthusiasts who can explain the origins of rocks, minerals and fossils and the part they played in the story of the Earth.

The Edinburgh Geological Society is one of the UK's foremost geological societies.

It has a full and varied programme of excursions and lectures that bring together everyone from complete beginners to professional geologists interested in exploring the geology of Scotland and beyond.

Lectures are held on alternate Wednesday evenings during the winter. Geologists working at the cutting edge of their profession give illustrated talks about the latest advances in their areas of expertise. Afterwards, you can enjoy a cup of tea and a chat with the speaker and fellow members of the Society.

Excursions are run during the summer to significant geological sites. Led by experts, they provide opportunities to see rocks, fossils, minerals and geological structures 'in the field'.

EGS Publications include a wide range of excursion guides on the geology of Scotland, from free leaflets to attractively produced books. The Society also publishes, jointly with the Geological Society of Glasgow, the *Scottish Journal of Geology*, a professional scientific journal of world standing. Visit the website to find details of these publications.

Local Geodiversity Sites are geological and geomorphological areas of regional and local importance. The EGS has three geoconservation sub-committees: Lothian and Borders GeoConservation, the Stirling and Clackmannan RIGS Group and Tayside Geodiversity. These groups designate, promote and help to protect Local Geodiversity Sites. Members of these groups are often involved in writing leaflets, site visits and educational and conservation activities, and they all welcome anyone who is interested in getting involved. (More information at www.edinburghgeolsoc.org/r_home.html)

The benefits of EGS membership include:

- Winter programme of **lectures** given by experts in their field
- Summer programme of day, evening and longer **excursions** to areas of geological interest
- The **Scottish Journal of Geology** (for Ordinary Fellows), our members' magazine **The Edinburgh Geologist** and programme **billets**
- **20% discount** on EGS publications
- Borrowing rights to the **University of Edinburgh library**

If you would like to try out a few of our lectures or excursions before joining the Society you are very welcome.

For more information on the Edinburgh Geological Society, visit the website at: www.edinburghgeolsoc.org



Crinoid, Dumfries & Galloway. Bill Gilmour



Prehnite, Ayrshire. BGS. P521540

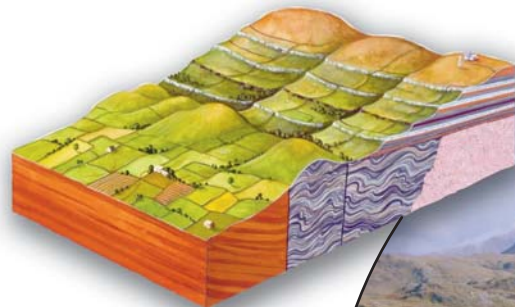


Diagram of an escarpment. BGS. P551756



Suilven, Sutherland. BGS. P000958

EDINBURGH GEOLOGICAL SOCIETY MEMBERSHIP APPLICATION FORM

I should like to apply for election as:

(Please tick)

- Ordinary Fellow** £20 annually
(aged 23 years or over)
- Family Fellow** £10 annually
(open to one other adult living at the same address as an Ordinary Fellow)
- Junior Associate** £4 annually
(under 23 years of age)
- Glasgow Associate** £10 annually
(Ordinary Members of the Geological Society of Glasgow)

(Please tick) I enclose a cheque/postal order for £ _____

I have set up a standing order for £ _____

BLOCK CAPITALS PLEASE

Title (Mr, Mrs, Miss, Dr etc) _____

Name _____

Address _____

_____ Postcode _____

Telephone _____ Fax _____

E-mail _____

Degrees and qualifications (if relevant) _____

The EGS produces a list of current members' names and addresses. This is available to any member and is distributed as part of the Welcome Pack. If you do not wish your details to be included in this list then please tick here.

Data Protection Act

The EGS will hold your details solely for the purpose of membership. It will not pass your details onto any other party for any reason.